

# VIEW FROM ABOVE LEARNING GUIDE



[www.getlifebasics.com](http://www.getlifebasics.com) | [customerservice@getlifebasics.com](mailto:customerservice@getlifebasics.com)



# PLANET EARTH

Imagine you are up in space, looking down on the planet we call Earth.

The Earth is round, like a ball, and its colors are mostly blue and green with white spots.

If you were to look at it for a long time, you would see that the Earth does not stay in one place.

It moves in a large circle around the sun. This circle is called the Earth orbit. A complete circle around the sun lasts one year, or just over 365 days.

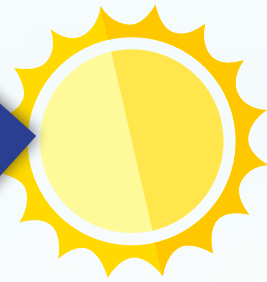


# THE SEASONS



The Earth revolves around itself with a slight slant. Therefore, during one half of the year the top part of the planet is facing the sun, making it summer and spring in those parts. When the bottom half is facing the sun, the top half experiences winter and fall.

# DAY AND NIGHT

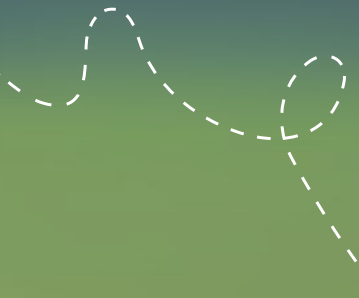
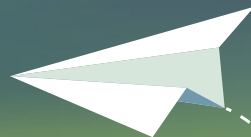


The Earth continuously spins like a top. In any given moment the sun only shines on half of its surface, and as it revolves it warms different parts of it. In the part the sun shines on it is day, while the other part is in dark night.



1. Do you know how many continents exist on planet Earth?

\*The answers to the questions on the last page



# THE WORLD

## Europe

Population: 79 million

Climate: Comfortable

Land Characteristics: Flatlands, hills, mountains

Area: 6,213,711 miles

## Asia

Population: 3,683 million

Climate: All types

Land Characteristics: All types

Area: 27,961,703 miles

## North America



## Antarctica

Population: None

Climate: Always very cold

Land Characteristics: Ice and snow

Area: 14 million square kilometers

## Australia

Population: 30 million

Climate: Warm and dry

warm and moist, comfortable

Land Characteristics: Rainforests,  
deserts, meadowlands (grass

Area: 11,184,681 miles

# THE WORLD

## North America

Population: 483 million

Climate: All types

Land Characteristics: All types

Area: 14,912,908 miles

## Africa

Population: 784 million

Climate: Warm and dry, warm and moist

Land Characteristics: Rainforests,  
(deserts, meadowlands (grass

Area: 18,641,135 miles



## South America

Population: 346 million

Climate: Warm and moist, warm and dry

Land Characteristics: Rainforests,  
(deserts, meadowlands (grass

Area: 8,699,196 miles

# HOW MANY COUNTRIES IN EACH CONTINENT?



2. Which continent is the largest?
3. Which continent is the smallest?
4. Which continent is the most populated?
5. Which continent is the coldest?
6. Which continent has the most countries?

# NORTH AMERICA

The continent North America consists of three giant countries!

Those three are Canada, the United States and Mexico.

It also includes smaller countries in Central America and islands in the Caribbean. This continent is the third largest in the world, and stretches from the North Pole to the Caribbean Sea.

A narrow strip of land called Central America connects it to the continent of South America.

North America has many different landscapes, from snowy mountaintops to rainforests, deserts and meadowlands- almost all of the different forms of land and nature on the planet.



## Facts about North America

**The largest country:** Canada- 6,145,444 miles.

**The most populated city:** Mexico City- 20,965,000 people.

**The highest number of television owners:** The United States- 81 residents out of every 100 have a television set.

**The lowest number of doctors:** Haiti- One doctor per every 7,140 residents.

## North America- People and places

**This continent is home to some of the richest and poorest people in the world.**

North America has some of the largest cities in the world, but also expansive areas of wilderness. The United States of America is the richest country in the world, and has large and impressive cities, but many people in countries like Nicaragua or El Salvador in Central America are very poor. The United States became very rich due to the fact that it produces vast quantities of metals like silver, nickel and copper as well as important products such as coal, oil and gas.

The condition of the residents in the countries of Central America is not very good. These areas don't have many natural resources and most of the people don't benefit from the wealth these countries manage to produce. Most of the population lives in the big cities and the rest are farmers, growing wheat, legumes and rice in quantities just sufficient to sustain themselves.

The Native Americans, the native population of North America, lived on the continent long before European settlers arrived there. Today many different people live there, originating from all over the world.

7. Who neighbors the United States from the north?
8. Who neighbors the United States from the south?
9. Which ocean to the United States' east?
10. Which ocean is west to the United States?
11. How many states make up the United States of America?

Did you know?

**The largest canyon-**

The length of the U.S.'s Grand Canyon is 277 miles long.



**The Empire State Building-** the Empire State Building in New York is one of the most famous landmarks in the United States. It has 102 floors rise to a height of 1250 feet.



# SOUTH AMERICA

When you say "South America" you think: jungle!

The world's largest tropical rainforest covers an area ten times larger than France. Within this jungle winds the Amazon River. This is the world's second longest river, but the water flowing through it constitutes two thirds of the Earth's river water.

The continent of South America is rich with other natural wonders. It has incredible waterfalls, snowy mountaintops and smoking volcanoes. This is paradise for flora and fauna. A quarter of all of the world's mammals live here, including the giant anteater and the vampire bat.

The rainforests are vivid with colorful birds, strange insects and animals of all shapes and sizes. They also house a giant variety of plants, some of which are used by us to make important medicine.



## Facts about South America

**The smallest country:** Surinam- 535,662,730 miles.

**Countries in which most of the population live in cities:** Uruguay and Argentina- 90 of every 100 people lives in a city.

**The country that produces the most silver:** Peru- produces 14 percent of the silver produced in the world.

**The highest number of televisions:** Argentina: 22 of every 100 people has a television.

**The lowest number of doctors:** Guinea- one doctor for every 6,220 citizens.

## South America- People and Places

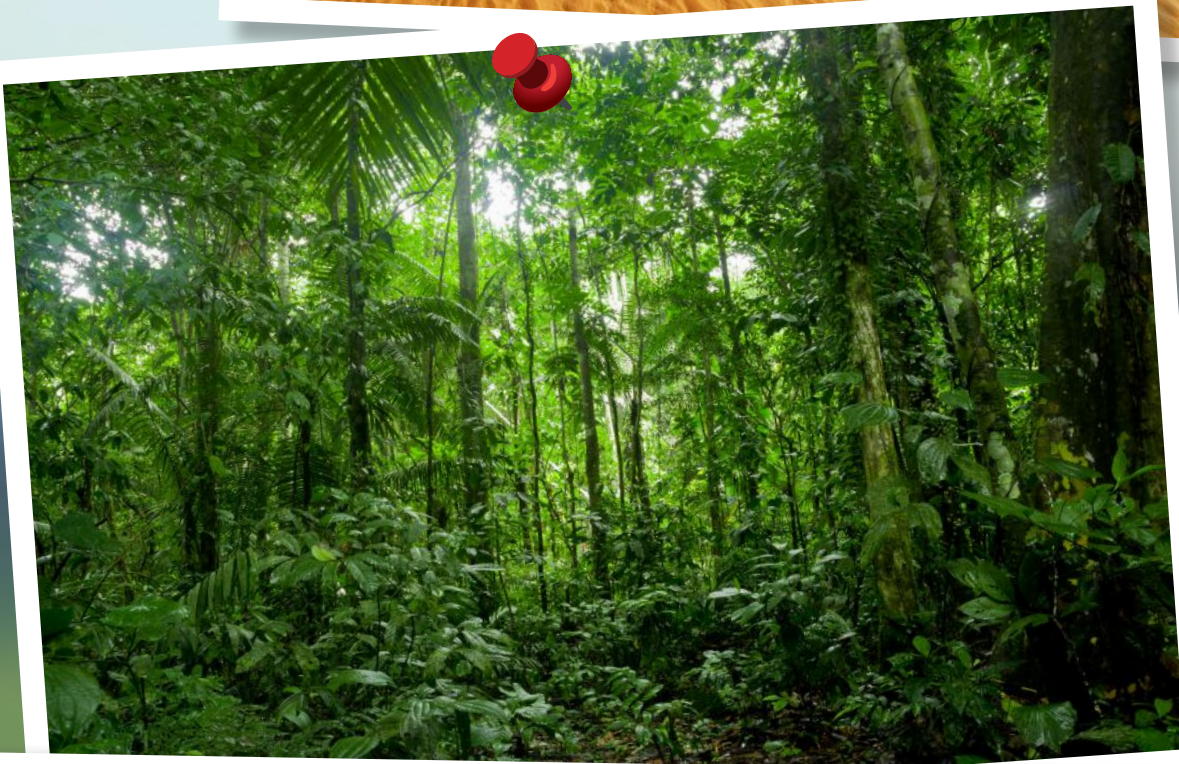
South America is the fourth largest continent in size, but its population is relatively small. The reason for this is that vast areas of the continent are uninhabitable, and the deforestation of the rainforests has caused many of the tribes who lived there to leave their homes. Some of the farms in South America are the largest in the world and span over areas larger than entire countries. But there are also many small farms, and most of the farmers are struggling to survive.

Today three quarters of the population of South America live in towns and cities. Many of these people are very poor and cannot afford to buy a house. They live cramped together in makeshift shacks on the borders of the cities. A small number of people in the continent are very wealthy. These are usually landowners, factory managers and political leaders. Until the Spanish and Portuguese conquests 500 years ago, South America was inhabited solely by native tribes. Now most of its population is a combination of local native tribes and people who arrived from Europe.

- 12. Can you count how many countries there are in South America?
- 13. Which is the largest country in the continent?
- 14. What is the southernmost country?
- 15. What countries border Ecuador?
- 16. What countries border Chile?

Did you know?

**The driest place-** It has not rained in the Atacama Desert for over 400 years



**The rainforests-** The rainforests are being cut down ceaselessly. Between the years 1990-2000 229,407 miles of rainforest have been cut down.

# EUROPE

Europe is the second smallest continent in the world- less than a quarter the size of Asia.

Even so, it is the most densely populated continent, since its population lives in 47 countries. Europe is able to sustain such a large population because half of its area is covered in good, fertile land. For this reason it has less room for wild animals and nature. The Brown European Bear is one of the few large animals remaining in this continent. In Europe there is a large variety of birds and smaller animals, like badgers, foxes, deer and squirrels.



## Facts about Europe

**The largest country:** Russia- 1,739,839 miles (in Europe, the rest of the country is in Asia)

**The most populated city:** Moscow, Russia- 10,102,000 people.

**The country in which most of the population live in cities:** Monaco- everyone lives in the city.

**The highest average life span:** San Marino- 81 years.

## Europe- people and places

The Europeans changed the world. Despite its being one of the small continents, Europe was the birthplace of authors, artists, scientists and explorers, whose lives affected the rest of the world since the days of the ancient Greeks. Most Europeans are descendants of the tribes who lived in the area many years ago. Today the residents of Europe speak over 70 different languages. During the last 50 years many immigrants have arrived in Europe from Asia, Africa and the Caribbean Isles.

Europe is a wealthy continent with a modern industrial system. There are more goods produced across the continent than in other parts of the world. Yet there are some countries, specifically in Eastern Europe, that remain poor.

17. What country must you pass through when travelling from Germany to Belarus?

18. What is the country closest to Ireland?

19. Is London in the north or south of England?

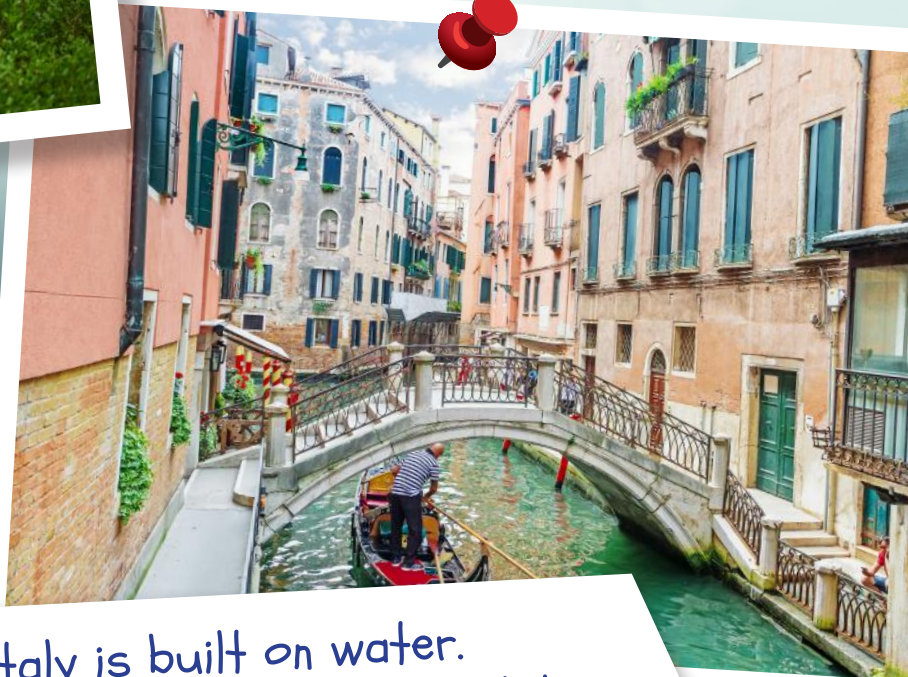
## Did you know?

### The largest island-

Great Britain is the largest island in Europe. It spans across 135,484 miles.



The largest mammal- the Brown Bear can reach a height of almost 4 feet.



**Venice**- the city of Venice in Italy is built on water. People travel from place to place in boats called Gondolas. The Gondolas are sailed using a long pole which reaches the ground beneath the water, pushing the boat along.

# ASIA

Asia is a large continent in more senses than one.

It is the largest continent in the world, spanning across one third of the Earth's land. Asia is also the most populated continent. Almost two thirds of the Earth's population inhabits it.

Asia is also home to a vast array of landscapes. It has the world's highest place (Mount Everest) and lowest place (the Dead Sea), as well as deserts, jungles and frozen icy wilderness. There are expansive areas of barren land in it, unfit for agriculture, but also fertile valleys, growing some of the world's finest produce.



## Facts about Asia

**The largest country:** Russia- 8,885,608 miles (in Asia, the rest of the country is in Europe).

**The largest rural population:** China- 1,284,960,000 people.

**The largest number of children per family:** Yemen- an average of 7.

**The longest railroad track:** The Trans-Siberian railroad: 5,776 miles (some in Europe).

## Asia- People and Places

Asia is populated by a huge number of different nations.

Each nation speaks a different language and leads a unique lifestyle. There are Mongolian herders, living in the grasslands, Japanese businessmen living in modern cities. Many Arab countries wealthy from the oil their land is rich in, and other countries, such as India, who are poor with a large peasant population. The four main religions in the world- Christianity, Judaism, Islam and Hindu- stemmed from Asia.

20. Which country must you pass through when travelling from India to Iran?

21. Which two countries border Mongolia?

22. What is the largest country in Asia?

23. What is the country closest to Sri Lanka?

24. Which ocean is to the south of India?

## Did you know?

**The highest place in the world-**  
The height of Mount Everest,  
on the border of China and Nepal,  
is about 5 miles long.



**The lowest place in the world-**  
the Dead Sea, on the border of Israel  
and Jordan is located 1,338 feet  
below sea level.



**India-** in India bicycles are used as taxis.  
They are called rickshaws, and are also  
used to transport cargo.

# AFRICA

Africa is the second largest continent in the world.

Almost three times the size of Europe! But in all of Africa live less people than in Europe. Africa is full of spectacular natural wonders, such as Mount Kilimanjaro, meadowlands and jungles bustling with wild animals.

The world's longest river, the Nile, flows through the continent's north-western part. It provides water to the farmers living along its banks. But most of the continent of Africa is very hot and hard to live in, since it is located on both sides of the equator.

The world's largest desert, the Sahara Desert, spans across the northern part of the continent, and the southern area is covered in part by tropical rainforests. Although Africa's land is rich in minerals like gold, diamonds and even oil, two thirds of the poorest countries in the world are found in this continent.



## Facts about Africa

**The largest country:** Sudan- 1,557,041 miles.

**The smallest country:** Seychelles- 282 miles.

**The most populated city:** Cairo, Egypt- 10,961,000 people.

**The shortest people:** The Pygmy tribe- 140 centimeters on average.

**The largest manufacturer of gold:** South Africa- 33 percent of the gold produced in the world.

**The largest number of children per family:** Niger- 7 children on average.

**The lowest life expectancy:** Botswana- 35 years.

## Africa-people and places

Africa is a very large continent, but it has a small population. The country of Nigeria has the largest population- 108 million people, but in many other countries the number of residents is less than five million.

The people of Africa come from many different cultures. In the north most people are Arab, and south of the Sahara, most are black. They are divided into over 800 different ethnic groups, each with its own language, religion and way of life.

Only a few people live in the deserts or the dry grasslands. The most populated areas are the Nile Valley, the Algeria Coastline and the South Africa Coastline. Over 60 percent of Africa's population lives in villages. They grow crops and cattle or other animals used for food. This is a difficult way of life, since the land is not fertile and the weather conditions are brutal.

25. Africa is the continent with the highest number of countries. Can you count how many countries are in it?
26. What is the southern most country in the continent?
27. What ocean borders Sudan?
28. What country must you pass through when travelling from Egypt to Algeria?

Did you know?

**The largest desert-**

The hot Sahara Desert spans over 5,754,489 miles.



**The largest cat-**

The lion is the largest cat in Africa. They can be over 4 feet in length.

# AUSTRALIA

Australia is not exactly one continent.

It is actually a group of island states, spanning an enormous area of the Pacific Ocean. The largest country in this group of islands is Australia, and apart from it there are 14 more island states. Australia is the smallest continent.

The second largest countries in Australia are New Zealand (which consists of two islands) and Papua New Guinea. The rest of this strange continent consists of at least 30,000 small islands which are not considered states. The majority of the continent's land has been secluded from the rest of the world for millions of years, so many different indigenous species of animals can be found there. Animals like the platypus, the koala and the kangaroo live only in Australia.



## Facts about Australia

**The largest country:** Australia- 4,773,554 miles.

**The smallest country:** Naoro- 13 miles.

**The most populated city:** Sydney, Australia- 3,502,000 people.

**The highest life expectancy:** Australia- 80 years on average.

**The largest manufacturer of diamonds:** Australia- 34 percent of global production.

## Australia- People and Places

About 80 percent of Australia's population lives in the south-east corner of the country. Almost all of its main cities are located there, including the capital Canberra. The land in the area is good for agriculture, and the weather is comfortable. There are nearly no people living in the center of the country. It is mostly barren desert and is very difficult to live in.

Most of Australia's population is descendants of families who arrived to the country from Europe during the 20th century. The Aborigines, the first people to inhabit Australia, now consist of less than one percent of the total population. The Aborigines arrived there from South-East Asia 40,000-70,000 years ago. They sailed from island to island for thousands of years and built settlements on every island. When the British arrived in Australia, about 200 years ago, they destroyed the Aborigine way of life.

Australia and New Zealand are wealthy countries thanks to their agriculture and mining of natural treasures. Papua New Guinea manufactures mainly wood and copper. The smaller countries are mostly poor, but in recent years the tourism industry of the Pacific Ocean is developing, which is helping these islands develop their economies.

29. Which country is located South-East of

Australia?

30. Is Australia north or south of the Equator?

Did you know?

The reptile with the longest life expectancy-  
The Tuatara lizard reaches up to 120 years old



The longest beak-  
The Australian Pelican has a beak 47 centimeters long

# ANTARCTICA

The continent of Antarctica is the most difficult place to live in in the world.

This is the coldest continent and 98 percent of its land is covered in ice and snow. In some places the depth of the ice is as deep as five kilometers down—more than ten times higher than the world's tallest building! The ice goes down into the ocean and creates giant ice shelves, these sometimes break off and disconnect from the continent, creating floating glaciers.

Almost nothing grows here, so it is no surprise that hardly any people live in Antarctica. But researchers and tourists come to visit the continent and a number of research stations are located in it, where scientists study the animals of the area and the ice itself.

Even animals find it difficult to live here. The few that manage to live mostly in the air or the ocean. Penguins, seals and whales manage to survive thanks to their thick layer of fat, which seals in their body heat. They eat fish and small sea creatures called plankton.

31. Which of the following animals lives in Antarctica?  
The white bear, the Caesar penguin, the northern seagull, the seal, the Albatross



# WORLD FLAGS



# ANSWERS

## Answers

1. 7 continents.

2. Asia

3. Australia

4. Asia

5. Antarctica

6. Africa

7. Canada

8. Mexico

9. The Atlantic Ocean

10. The Pacific Ocean

11. 50

12. 12

13. Brazil

14. Argentina

15. Colombia and Peru

16. Argentina, Bolivia and Peru

17. Poland

18. England

19. South

20. Pakistan

21. China and Russia

22. Mexico

23. The Atlantic Ocean

24. The Pacific Ocean

25. 50

26. 12

27. Brazil

28. Argentina